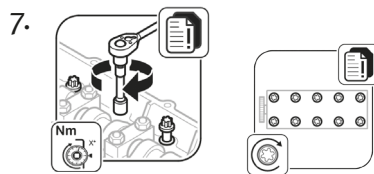
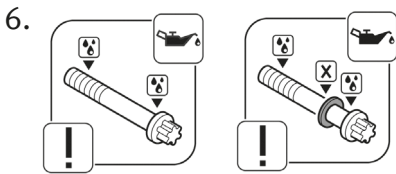
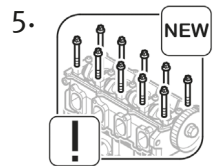
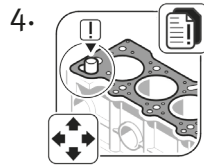
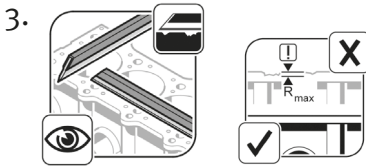
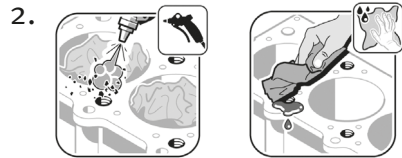
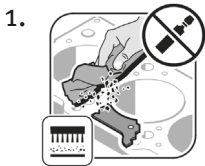


R_z	15 - 20 μm	11 μm	11 - 20 μm
R_{max}	20 - 25 μm	15 μm	15 - 20 μm
W_t	8 - 10 μm		



ElringKlinger AG

Max-Eyth-Straße 2 | D-72581 Dettingen/Erms
 Fon +49 7123 724-799 | Fax +49 7123 724-798
 elring@elring.de | www.elring.com



Das Original